

# Australian & International Art & History

Collectors' List No. 205, 2022  
e-catalogue

## JOSEF LEBOVIC GALLERY

*Celebrating 45 Years • Established 1977*

Member: AA&ADA • A&NZAA • IVPDA (USA) • AIPAD (USA) • IFPPA (USA)

© Licence by Copyright Agency for the Visual Arts, 2022, LRN 5523.

Address: 103a Anzac Parade, Kensington (Sydney), NSW

Phone: +61 2 9663 4848 • Mobile: 0411 755 887 • ABN 15 800 737 094

Email: [joseflebovicgallery.com](mailto:joseflebovicgallery.com) • Website: [joseflebovicgallery.com](http://joseflebovicgallery.com)

Hours: by appointment or by chance Wednesday to Saturday.



CL205-1

**Thomas Daniell** (Brit., 1749–1840).

*Part Of The Black Town, Madras [India], 1797.*

\$2200

Rare proof before text is added. Shows the area of Chennai now known as George Town or Muthialpet.

CL205-2

***Ansicht Der Stadt Und Gegend Von Bonn.***  
***Vue De La Ville Et Des Environs De Bonne***  
***[View Of Bonn And Its Surrounds], 1798.***

\$660

This print was part of an album of 50 views of the Rhine published by Domenico Antaria.





CL205-3

**Thomas Rowlandson** (Brit., c1756–1827), After **George Murgatroyd Woodward** (Brit., 1765–1809).

*The Art Of Ingeniously Tormenting!*, 1808.

\$880

Image inspired by the novelist Jane Collier's *An Essay on the Art of Ingeniously Tormenting* (1753), a satirical advice book giving guidance on how to nag, tease and mortify.



CL205-4

**Thomas Lewin** (Brit., 1774–c1840).

*Yellow-Crowned Bishop (Euplectes Afer)*, 1827.

\$4400

To date, this image has not been published.



CL205-5

**Keisai Eisen** (Japanese, 1790–1848).

*"Morning Glory", c1840s.*

\$2200

Keisai Eisen was a noted Japanese ukiyo-e artist whose work was admired and collected by Vincent van Gogh.



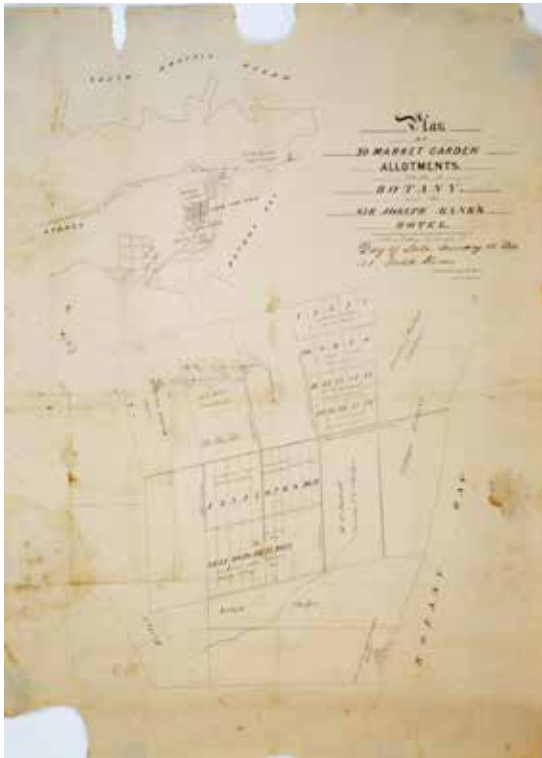
CL205-6

**John Skinner Prout** (Brit., 1805–1876).

*Millers Point Sydney, From The Flag Staff Hill, 1842.*

\$1350

This framed tinted lithograph is from Prout's 1842 publication *Sydney Illustrated*.



CL205-7

**Plan Of 39 Market Garden Allotments Situate [Sic] At Botany, Near The Sir Joseph Banks Hotel [NSW], c1854.**

\$2200

This plan is an uncommon and early surviving record of some of the first subdivisions in Botany.



CL205-8

**Madame Sibley [Australian Phrenologist And Mesmerist], c1870s.**

\$990

Madame Sibley is shown posed next to three skulls on a side table.





CL205-9

*The Comic History Of New South Wales, From 1777 to 1877, 1878.*

\$1100

Group of twelve booklets containing many references and illustrations which depict the fraught race relations in Australia's early colonial period.



CL205-10

**Sample Book Of Transfer Ornaments, c1880.**

\$880

This soft-cover catalogue with lithographic illustrations includes “flower and fruit pieces, portraits, landscapes, marqueterie” and equestriana, sporting, heraldic transfer ornaments and lettering.





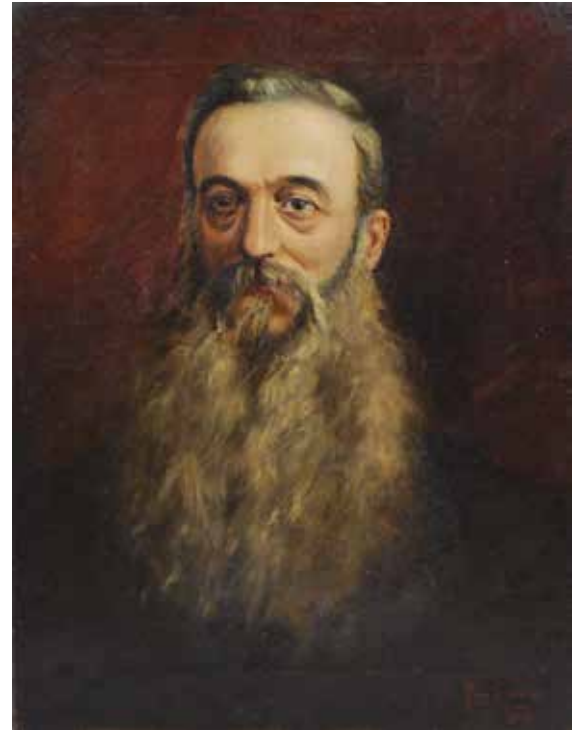
CL205-11

**Mary Stoddard** (Aust., c1852–1901).

*Christmas Bells*, 1886.

\$6600

This award-winning painting is the original watercolour for the accompanying framed colour supplement printed by John Sands for *The Illustrated Sydney News*.



CL205-12

**Percy Spence** (Aust., 1868–1933).

*[Portrait Of A Bearded Man]*, 1888.

\$1950

Spence painted this portrait at the beginning of his career, when he was about 20 years old.



CL205-13

**J.M. Cantle** (Aust., 1849–1919).

*[Kookaburra With Lizard Prey]*, 1894.

\$1650

Signed watercolour by John Mitchell Cantle, best known as an ornithological painter, illustrator, cartoonist and postcard designer.



CL205-14

**Giovanni Moro** (Italian, 1877–1949).

*Italian Landscape And Religious Paintings And Studies*, c1900–1940s.

\$9900

Group of 18 oil paintings, most depicting views of northern Italy.



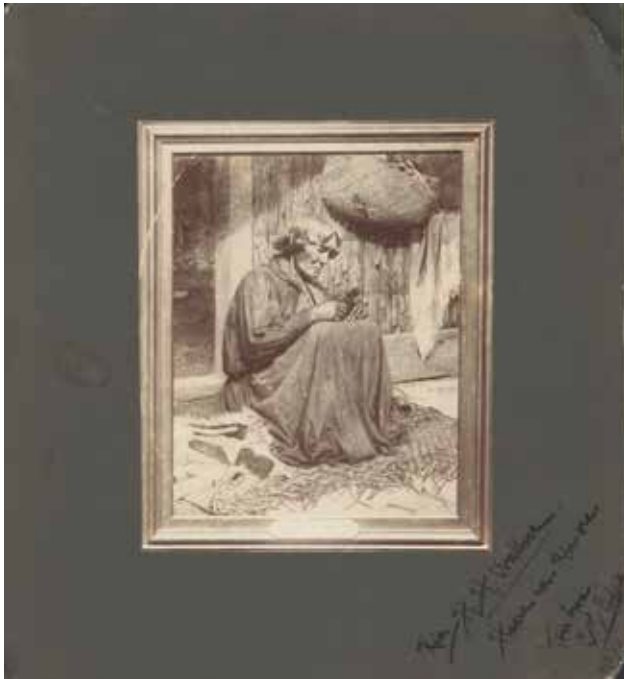


CL205-16

***Group Of Prize Cattle At The Royal Agricultural Show  
[Paddington, NSW], 1909.***

\$1650

Rare surviving vintage silver gelatin photograph in  
panorama format.



CL205-15

*After C.F. Goldie (NZ, 1870–1947).*

*Photograph Of Charles Goldie's Painting "The Widow", c1906.*

\$4400

Photograph of a portrait of Maori female elder Harata Rewiri Tarapata of Ngapuhi, painted by renowned New Zealand artist Charles Frederick Goldie in 1903. It is inscribed, dated "31.5.06" and signed by Goldie in ink on original backing below image.



CL205-17

Lionel Lindsay (Aust., 1874–1961).

[Schweppes Aerated Sarsaparilla], c1910.

\$2850

This painting is the original artwork for an advertisement for Schweppes, which most likely appeared in the publication *The Lone Hand*.

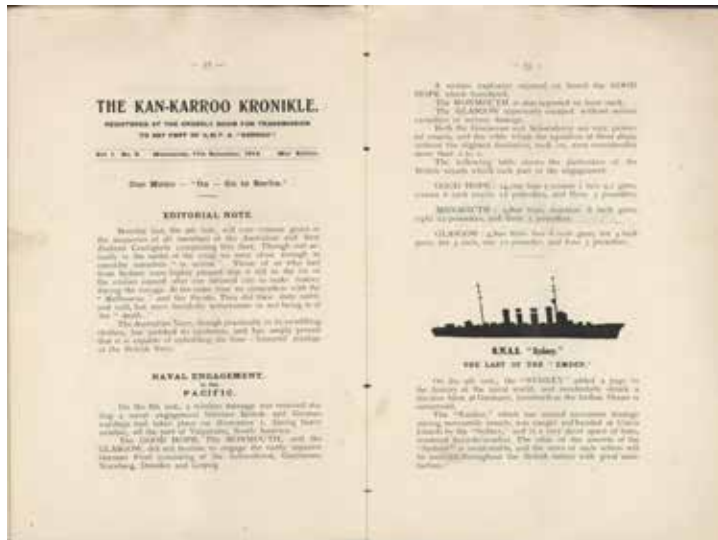


CL205-18

**“Miner’s Right” and “Business License” For Chinese Immigrant, 1911.**

\$2200

Miner's rights and business licence documents, issued to Chinese immigrants during the 19th and early 20th centuries in Australia, seldom survive and are subsequently extremely rare.



CL205-19

**"The Kan-Karoo Kronikle" [Onboard Newsletter Of HMTS "Karoo", WWI], 1914.**

\$990

This newsletter includes 50 autographs by Australian troops and crew. It was produced in a typed format on board the HMTS Karroo, while transporting Australian troops from Melbourne to Egypt on their way to combat in Europe.



CL205-20

**Around The Commonwealth By Aeroplane [Australian Board Game], c1914.**

\$1100

The game includes six die-cast aeroplane "Bristol Boxkite" counters, in good condition, which are extremely rare due to their fragility.



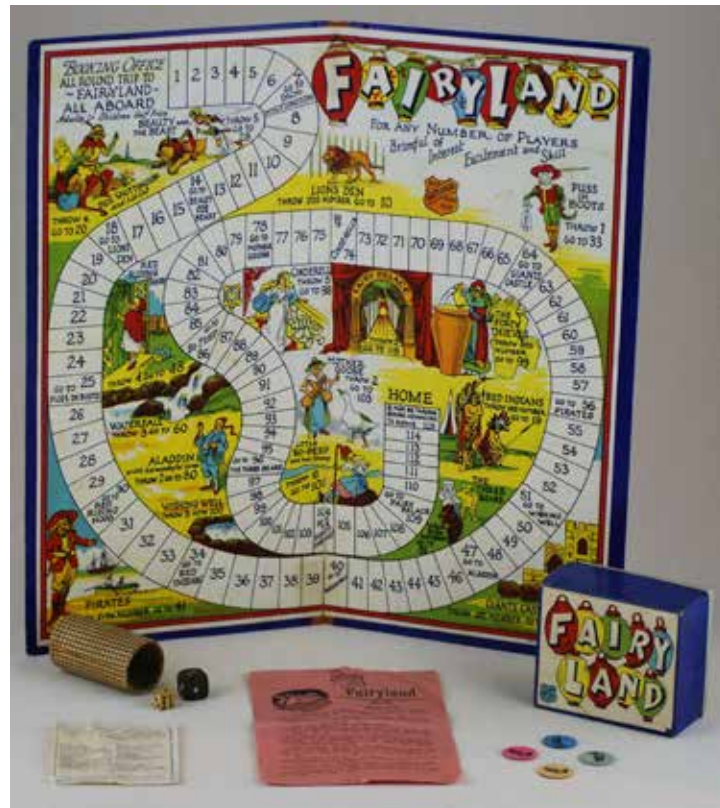
CL205-21

**Percy Leason** (Aust., 1889–1959).

*Illustrations For Children's Book "Here Is Faery", c1915.*

\$4400

This collection of five drawings by Percy Leason is part of the original artwork used for the book *Here is Faery* by Furnley Maurice and Roy Leathes Newmarch.



CL205-22

**Fairyland [Australian Board Game]**, c1916.

\$660

The box includes a rare list of 31 National games.



CL205-23

**Hall Thorpe** (Aust./Brit., 1874–1947).

*A Wildflower Bunch*, c1918/1922.

\$4950

This rare image was illustrated in *The Studio Year-Book of Decorative Art 1918*.



CL205-24

**Two WWI Hand Waver Flags**, 1919.

\$2200

Extremely rare surviving examples of commemorative welcome home flags for WWI.





CL205-25

**Frederick James 'Fred' Elliott** (Aust., 1864–1949).

*Sydney Harbour*, 1920.

\$1650

Elliott's was active in Sydney from the 1890s to the 1920s, mostly using Sydney Harbour as his subject.



CL205-26

***Kookaburra Mascot Radiator Cap***, c1920s.

\$550

Mascot has a crisp casting with no wear.



CL205-27

**Sunny Day, Rainy Day [Manly, NSW], c1920s.**

\$1650

Pair of photographs showing the Ocean View boarding house on the corner of North Steyne and Raglan Street, Manly.



CL205-28

**Emma Bormann** (Austrian, 1887–1974).

*Ulm, Blick Von Munster Auf Die Kaiserplatz [View From Ulm Cathedral To The Kaiserplatz, Germany], c1920s.*

\$1850

The vantage point for this view was from the Ulm Minster (161.5 m/530 ft), which is currently the tallest church building in the world.



CL205-29

**Woollahra House [Sydney, NSW], c1920s.**

\$2200

Located at Point Piper, Woollahra House was one of the largest Victorian colonial mansions of its time.

CL205-30

**Armand Louis Georges Vallée** (French, 1884–1960).

*Views Of Social Life In France, Teaching Aids For Children*, c1920s.

\$2750

Group of five colour lithographs which include images of a chauffeur-driven Citroen outside a hotel, and a passenger ship in port.





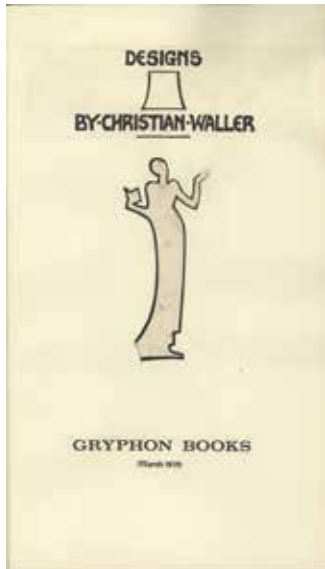
CL205-31

**Christian Waller** (Aust., 1894–1954).

*Study Drawings*, c1920s–1930s.

\$9900

Group of 12 pencil drawings and two linocuts pasted in hand-bound album.



CL205-32

**Bertha Lum** (American, 1869–1954).

*The South Wind*, 1921.

\$3300

This colour woodcut, depicting one of Lum's best images, is uncommon.



CL205-33

**University Of Sydney Architecture  
Students' Drawings, 1922–1947.**

\$29,500

Collection of 54 architectural drawings and one dyeline print, depicting Australian colonial buildings and classical architecture.

CL205-34

***"Bishopscourt Estate" Randwick [NSW], 1925.***

\$1650

Bishopscourt estate, formerly the residence of the Anglican Bishop of Sydney, broke the auction record for outdoor sales in 1925.







CL205-35

**Norman Lindsay** (Aust., 1879–1969).

*[Coquettish Nude]*, c1929.

\$2850

This drawing is most likely a study for an unpublished etching entitled *Coquette*. Provenance includes Meg Stewart, daughter of Australian artist Margaret Coen.



CL205-36

**Margaret Preston** (Aust., 1875–1963).

*Flowers In Jug*, c1929.

\$26,500

This woodcut originally came in a folder which accompanied the book *Margaret Preston's Recent Paintings*, 1929.



CL205-37

**Carl Moser** (Italian/Austrian, 1873–1939).

*Flamingo*, 1930.

\$2200

Influenced by the French impressionists and Japanese art, Carl Moser became well-known for his graphic woodcuts.

CL205-38

After **Dorothy Wall** (NZ/Aust., 1894–1942).

*Blinky Bill [Bookends]*, c1930s–1940s.

\$550

Blinky Bill is an anthropomorphic koala and children's fictional character created by author and illustrator Dorothy Wall.



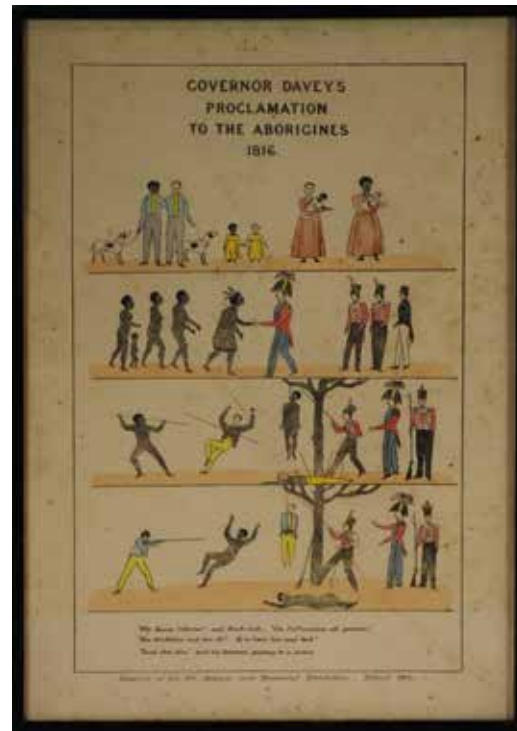


CL205-39

***Pokerwork Vase, Souvenir From Coo-ee Comedy Co, 1931.***

\$660

The Coo-ee Comedy Co was run by hairdresser and tobacconist William Thomas Howitt of Tumut, NSW during the 1920s.



CL205-40

*After* **George Frankland** (British, 1800–1838).

*Governor Davey's Proclamation To The Aborigines, 1816, 1931.*

\$1350

This lithograph, possibly the last issue, was printed for an exhibition in Hobart in 1931.



CL205-41

*"Over The Range", The Latest Book By Ion L. Idriess, Australia's Most Popular Author [Promotional Poster], 1937.*

\$1850

Idriess' book, illustrated in this poster, attracted glowing reviews.

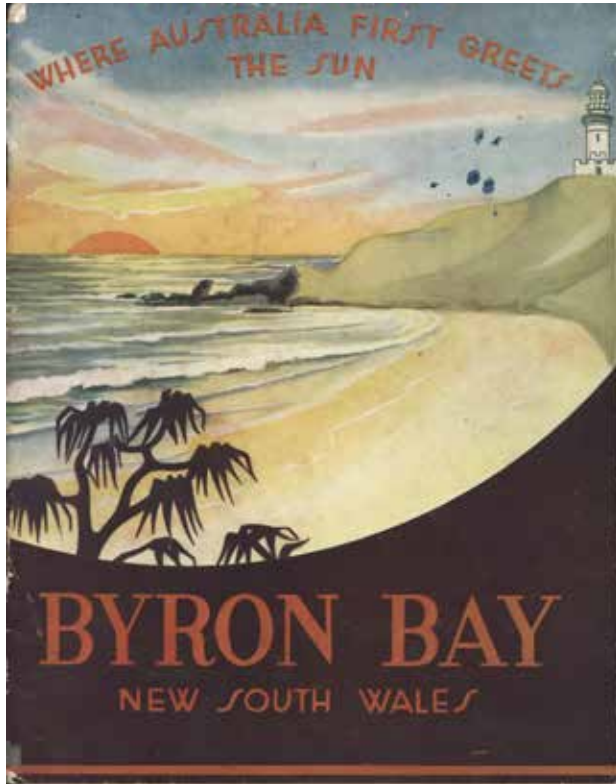


CL205-42

*Five Best Sellers As Gift Suggestions [Includes Book by Ion L. Idriess], c1938.*

\$990

Rare promotional poster for books, which includes *Madman's Island* by Ion L. Idriess.



CL205-43

***Byron Bay, NSW, Where Australia First Greet The Sun***, c1939.

\$880

Uncommon travel booklet containing numerous articles covering a wide range of subjects, including gold prospecting on Byron Bay beach.



CL205-44

***RMS "Queen Elizabeth"***, 1947.

\$2200

Vintage silver gelatin photograph, inscribed and dated by the ship's captain Sir James Bisset CBE, Commodore, Cunard White Star Co. Ltd.





CL205-45

**George Molnar** (Hungarian/Aust., 1910–1998).

*Ye History Of Prefabrication In Terra Australis*  
*[Promotional Christmas Card From Vandyke*  
*Brothers Homes], c1950.*

\$880



This rare promotional multi-panel foldout card by George Molnar was found behind a wardrobe in a prefabricated fibro house in Yagoona, NSW.



CL205-46

*Ion L. Idriess, Australia's Greatest Storyteller*, c1954.

\$1350

Rare promotional poster, illustrating six of Idriess' books.



CL205-47

**Leslie Holland** (Brit., 1907–2005).

*Escena De Calle, Asuncion* [Cove Street Scene, Asuncion, Paraguay], 1959/1960.

\$1100

Leslie Howard, while travelling widely in England, became attracted to communal living (Bruderhof) and alternative lifestyles. This experience led him to travel with his family to South America, settling for a time in rural Paraguay.



CL205-48

**Norman Hetherington** (Aust., 1921–2010) & **Peter Hardman**.

*NSW Bush Fire Committee Promotional Materials*, c1960.

\$1850

Group of four items consisting of two posters showing the mascot “Smokey”, one publication *Bush Fire Bulletin*, and a photograph depicting “Smokey” with diorama.



CL205-49

**Leslie Holland** (Brit., 1907–2005).

*[South American Band, Paraguay]*, 1960.

\$2200

Gouache based on Leslie Holland's experience in rural Paraguay. (He was also known for his cover for the 1932 first edition of Aldous Huxley's *Brave New World*.)





CL205-50

**Alex Katz** (Amer., b.1927).

*Grey Interior II*, 1968.

\$1250

Colour screenprint showing Katz's use of large flat areas of colour.



CL205-51

**George Molnar** (Hungarian/Aust., 1910–1998).

*Double Bay Pulsates With Cosmopolitan Sophistication [Sydney, NSW]*, c1970s.

\$2200

Watercolour showing Double Bay when it was an enclave for displaced Europeans enjoying a café society.



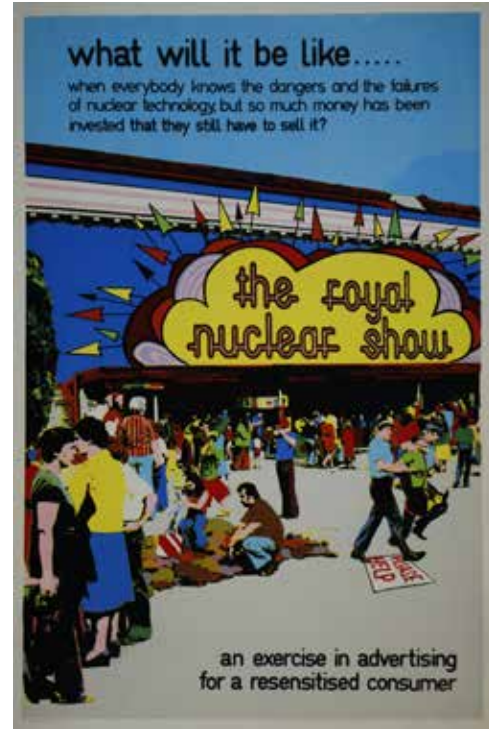
CL205-52

**Charles Blackman** (Aust., 1928–2018).

*The Painter Of The White Cat's Garden*, c1980.

\$1350

Etching showing Blackman painting one his pictures, which were "initially inspired by Claude Monet's late waterlily series."



CL205-53

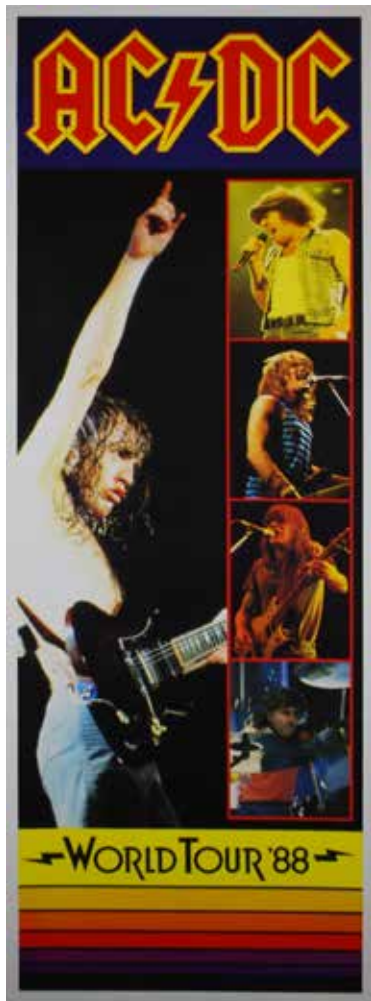
**Toni Robertson** (Aust., b.1953).

*The Royal Nuclear Show* [Sydney], 1981.

\$6600

Anti-nuclear series of 6 screenprint posters parodying the Sydney Royal Easter Show.





CL205-54

**AC/DC. *World Tour '88*, 1988.**

\$3950

Rare poster of unusual size, in good condition.



CL205-55

**Charles Blackman (Aust., 1928–2018).**

*Dangerous Liaisons*, 1989.

\$1350

Image most likely inspired from a scene in the 1988 film, *Dangerous Liaisons*.



CL205-56

**John Olsen** (Aust., b.1928).

*Overhead Rail [New York], 1998.*

\$1100

This print is from Olsen's series of six etchings titled *New York nowhere: meditations and celebrations, Neurology Ward, the New York Hospital, 1998.*



CL205-57

**Mr Brainwash** (French/Amer., b.1966).

*"Love Is The Answer", c2000.*

\$990

This poster includes images of Einstein, JFK, Charlie Chaplain, Marilyn Monroe, Spock, Elvis Presley, Madonna, Che Guevara and references works of art, e.g. Andy Warhol's *Campbell's Soup Cans*.