



Collectors' List No. 204, January, 2022
e-catalogue

Max Dupain

Architecture & Street Life

JOSEF LEBOVIC GALLERY

Celebrating 45 Years • Established 1977

Member: AA&ADA • A&NZAA • IVPDA (USA) • AIPAD (USA) • IFPDA (USA)
© Licence by Copyright Agency for the Visual Arts, 2022, LRN 5523.

Address: 103a Anzac Parade, Kensington (Sydney), NSW
Postal: PO Box 93, Kensington NSW 2033, Australia
Phone: +61 2 9663 4848 • Mobile: 0411 755 887 • ABN 15 800 737 094
Email: josef@joseflebovicgallery.com • Website: joseflebovicgallery.com
Hours: by appointment or by chance Wednesday to Saturday.



Max Dupain (Aust., 1911–1992)

Shadow Patterns, Eddy Avenue [Central Station, Sydney], 1935/1970s

Silver gelatin photograph, photographer's stamp verso, 29.6 x 25.7cm. *Handling crinkles, some with surface cracking.*

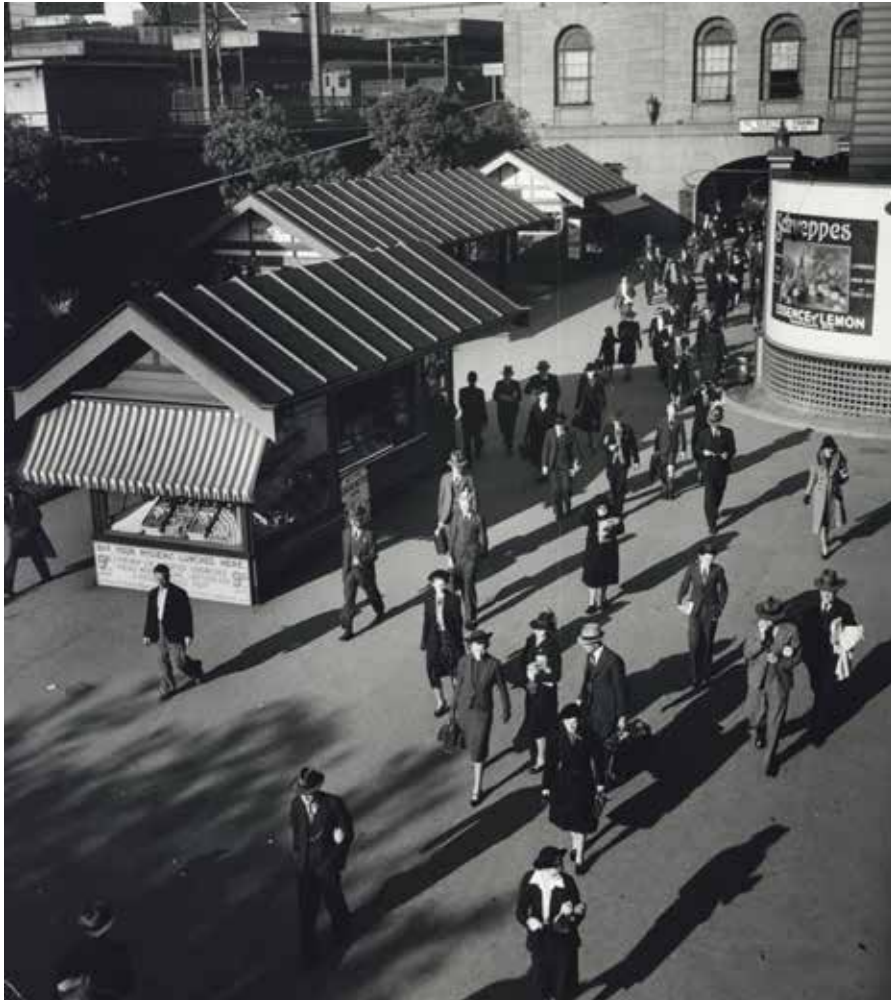
Stamp includes "Max Dupain and Associates Pty Ltd, Unit 13, Valletta Building, Campbell Street, Artarmon 2064, Australia. Telephone 439 4140, 439 4256."

Illustrated in White, *Dupain's Sydney*, 1999, p66.

Taken from Central Station colonnade, this image shows commuters waiting to catch a tram in Eddy Avenue. The tramline was discontinued in 1961 and a new light rail was opened on the same site in 2020. Ref: Wiki.

Ref: CL204-1

Price: \$4400



Max Dupain (Aust., 1911–1992)

[Morning Commuters, Central Station, Eddy Avenue Entrance, Sydney], c1938/ 1970s

Silver gelatin photograph, photographer's stamp verso, 22.4 x 20.3cm. *Slight developing flaws, minor creases with surface cracks to lower left corner.*

Stamp includes "Max Dupain and Associates Pty Ltd, Unit 13, Valletta Building, Campbell Street, Artarmon 2064, Australia. Telephone 439 4140, 439 4256."

Advertising signs in the image include "Buy your hygienic lunches here, 9 pence" and "Schweppes Essence of Lemon [&] Vanilla."

Ref: CL204-2

Price: \$4400



Max Dupain (Aust., 1911–1992)

[Corner Of Castlereagh And Market Streets, Sydney], c1940s

Vintage silver gelatin photograph, authentication stamp with facsimile signature, signed and dated by photographer's son Rex Dupain in pencil verso, 25.8 x 30.6cm. *Minor handling crinkles and scuffs.*

Image shows pedestrians crossing Castlereagh Street with a tram and the recently opened David Jones Men's Store in the background. Ref: dictionaryofsydney.org.

Ref: CL204-3

Price: \$4400



Max Dupain (Aust., 1911–1992)

[Proposed Hotel Mereton, Elizabeth Bay], c1959

Vintage silver gelatin photograph with montage, press print, photographer's stamp, publishing and date stamps with "1959", slips of newsprint with caption, and publishing annotations in pencil verso, 24.8 x 20cm. *Minor handling crinkles, some with surface cracks to corners, slight developing flaws, indents due to annotation verso.*

Caption includes "An impression of the drive-in hotel proposed for Onslow Avenue, Elizabeth Bay. The 24 floors would rise 259 feet above the road." Stamps include "Max Dupain Studio, 49 Clarence Street, Sydney. BX 4901, BX 4907" and "Used 17 Oct. 1959, *Herald*."

The photograph shows the end of Ithaca Road in Elizabeth Bay, looking back up the hill. The building in the foreground, 5 Ithaca Road, is next to Boomerang, a heritage-listed private house at 42 Billyard Avenue. A montage of the proposed Mereton Hotel, which did not come to fruition, has been added to the skyline.

Ref: CL204-4

Price: \$3300



Max Dupain (Aust., 1911–1992)

[Pedestrians And Bus, Martin Place And George Street, Sydney], 1959

Vintage silver gelatin photograph, dated in ink with photographer's stamp verso, 20.5 x 20.3cm. *Slight dent to upper portion.*

Stamp includes "Max Dupain and Associates, 49 Clarence St, Sydney 2000. 29 4901."

Image shows a double-decker bus numbered "500", with an advertisement for the new Anthony Hordern West Ryde department store. The building on the right, 2 Martin Place, is currently occupied by Paspaley.

Ref: CL204-5

Price: \$4400



Max Dupain (Aust., 1911–1992)

247 Bus To Wynyard [Sydney], c1959/1970s

Vintage silver gelatin photograph, photographer's stamp verso, 20.2 x 25.8cm. *Minor handling crinkle to upper portion.*

Stamp includes "Max Dupain and Associates Pty Ltd, Unit 13, Valletta Building, Campbell Street, Artarmon 2064, Australia. Telephone 439 4140, 439 4256."

Illustrated in Dupain, *Inside Sydney: Photographs by Max and Rex Dupain*, 2004, p67, with erroneous date "1956" (one of the cars in the background is a 1959 Holden sedan).

Image shows a double-decker bus numbered "247" on the corner of Grosvenor and York Streets, with Sydney Harbour Bridge traffic in the background.

Ref: CL204-6

Price: \$4400



Max Dupain (Aust., 1911–1992)

[Newsstand In Hunter Street, Looking Towards O'Connell Street, Sydney], 1960/1970s

Vintage silver gelatin photograph, annotated and dated in ink with photographer's stamp verso, 25.5 x 20.2cm. *Slight developing flaws.*

Annotation reads "Newsstand, O'Connell St." Stamp includes "Max Dupain and Associates Pty Ltd, Unit 13, Valletta Building, Campbell Street, Artarmon 2064, Australia. Telephone 439 4140, 439 4256."

Illustrated in White, *Dupain's Sydney*, 1999, p78, with the caption "Newspaper stand in Hunter Street. A paper boy reads the sporting news while waiting for the evening peak. The magazines display the glamour of the early 1960s."

Ref: CL204-7

Price: \$4400



Max Dupain (Aust., 1911–1992)

[Young Men Looking At Movie Poster For “The Shaggy Dog”, Sydney], 1960

Vintage silver gelatin photograph, dated in ink with photographer's stamp verso, 20.5 x 21.9cm. *Slight developing flaws.*

Stamp includes “Max Dupain and Associates, 49 Clarence St, Sydney 2000. 29 4901.”

Illustrated in Dupain, *Inside Sydney: Photographs by Max and Rex Dupain*, 2004, p63.

Ref: CL204-8

Price: \$3300



Max Dupain (Aust., 1911–1992)

[Two Women At Newsstand In Front Of GPO, Martin Place, Sydney], 1960/1970s

Vintage silver gelatin photograph, photographer's stamp verso, 21.5 x 20.2cm.

Stamp includes "Max Dupain and Associates Pty Ltd, Unit 13, Valletta Building, Campbell Street, Artarmon 2064, Australia. Telephone 439 4140, 439 4256."

Image includes *Financial Review* headline dated "March 24, 1960" and a "Vaclean" parcel from David Jones.

Ref: CL204-9

Price: \$6600



Max Dupain (Aust., 1911–1992)

[Two Office Workers In Front Of The GPO Across From The Colonial Mutual Life Building In Martin Place, Sydney], c1960/1970s

Vintage silver gelatin photograph, photographer's stamp verso, 25.5 x 19.9cm. *Minor handling crinkles to edges.*

Stamp includes "Max Dupain and Associates Pty Ltd, Unit 13, Valletta Building, Campbell Street, Artarmon 2064, Australia. Telephone 439 4140, 439 4256."

Image shows one woman lighting a cigarette, the other holding a sheet of stamps.

Ref: CL204-10

Price: \$5500



Max Dupain (Aust., 1911–1992)

[View Of Sydney Harbour From Roof Garden, ICT Centre, North Sydney], c1962

Vintage silver gelatin photograph, press print, photographer's stamp, publishing and date stamps with "1962", slip of newsprint with caption and publishing annotations in pencil verso, 19.9 x 25.2cm. *Minor handling crinkles, some with surface cracks and chips to corners, indents due to annotation verso.*

Caption reads "The roof garden of the new ICT [Information Communications Technology] electronic data processing centre at North Sydney provides a panoramic view of the harbour. On page 33 a staff correspondent discusses the computer installation at the centre." Stamps include "Max Dupain and Associates, 49 Clarence St, Sydney. [BX] 4901" and "*Financial Review*, 10 July 1962. Monday."

The view shows Luna Park in the middle foreground, and the Sydney Harbour Bridge in the background. Visible through the bridge is the newly completed 117 metre-high AMP Building, which was the first skyscraper in Australia to exceed the 46 metre height limit set in 1912. Ref: Sydney Living Museums.

Ref: CL204-11

Price: \$4400



Max Dupain (Aust., 1911–1992)

***[The Sulman Award-Winning Fisher Library
At The University Of Sydney], c1963***

Vintage silver gelatin photograph, press print, photographer's stamp and publishing stamps with five dates from 1963 to 1975, two slips of newsprint with caption and publishing annotations in pencil verso, 16 x 23.3cm. *Handling crinkles, some with surface cracks, indents due to annotation verso.*

Stamps include "Max Dupain, Clive Kane & Associates Pty Ltd. 49 Clarence St, Sydney. Phone 294901"; "Used 17 Sep. 1963, *Herald*"; and "Used 13 Jul. 1964, *Financial [Review]*."

Ref: CL204-12

Price: \$2200

Max Dupain (Aust., 1911–1992)

[Wilkinson Award-Winning Townhouses, Rushcutter's Bay (Darling Point)], c1968



Vintage silver gelatin photograph, press print, photographer's stamp, publishing and date stamps with "1969" and "1971", slips of newsprint and typed slip with captions, and publishing annotations in ink and pencil verso, 19.2 x 25.2cm. *Minor handling crinkles, some with surface cracks, indents due to annotation verso.*

Captions include "Wilkinson Award 1968. The Penthouses. Ancher Mortlock, Murray & Woolley"; "This year, for the first time, town houses were eligible for the Wilkinson Award, which had previously been restricted to single-family houses"; and "The Penthouses at Rushcutter's Bay: An imaginative scheme of townhouses." Stamps include "Max Dupain and Associates, 49 Clarence St, Sydney 2000. 29 4901"; "Used 21 Aug. 1969, *Herald*"; and "Used 18 Mar. 1971, *Herald*."

Furniture designer and property developer Harry Sebel (Aust., 1915–2008) commissioned prominent architect Ken Woolley (Aust., 1933–2015) in 1967 to design The Penthouses located at 58 New Beach Road, Darling Point. Ref: Wiki; architectureanddesign.com.au; *SMH*, 27.10.2008.

Ref: CL204-13

Price: \$3300



Max Dupain (Aust., 1911–1992)

[The National Library Of Australia By Night], c1968

Vintage silver gelatin photograph, press print, publisher's date stamps include "1968" and "1970", annotated "Max Dupain" in an unknown hand in ink and typed slip with caption verso, 16 x 21cm. *Minor handling crinkles, some with surface cracks.*

Caption continues "[The National Library of Australia] stands on the Southern Shore of Lake Burley Griffin in Canberra."

Provenance: John Fairfax newspaper archive.

Ref: CL204-14

Price: \$3300



Max Dupain (Aust., 1911–1992)

[John Mansfield Library At Cranbrook School], c1968

Group of three vintage silver gelatin photographs, press prints, each with photographer's stamp and typed slip with caption, two photographs with publishing and date stamps with "1968" and "1981", and publishing annotations in pencil and ink verso, sizes range from 17.8 x 25.8cm to 24.5 x 20.1cm. *Minor handling crinkles to edges, indents due to annotation verso.*

Captions include "The John Mansfield Library at Cranbrook School fits snugly into the sloping hillside overlooking the oval. Its aluminium roof is low-pitched to avoid obstructing view from higher ground. It cost \$72,000 and was officially opened yesterday to mark the fiftieth anniversary of the school's foundation (July 12, 1918)" and "The sixth form reading area to the reading room of the John Mansfield Library...It has fluorescent lighting, study carrels for senior boys and brick internal walls." Stamps include "Max Dupain and Associates, 49 Clarence Street, Sydney. BX 4901"; "Used 23 Jul. 1968, *Herald*"; and "Used 2 Apr. 1981, *Herald*."



Ref: CL204-15

Price: \$6600 (The group)

Max Dupain (Aust., 1911–1992)

[Revolving Restaurant, Australia Square Building, Sydney], c1969



Vintage silver gelatin photograph, press print, photographer's stamp, publishing and date stamps with "1969", "1970" and "1982", newsprint and typed slips with captions, and publishing annotations in pencil verso, 20.6 x 23.6cm. *Minor handling crinkles, some with surface cracks and chips to corners, indents due to annotation verso, old tape verso.*

Captions include "The Australia Square Project. Harry Seidler & Associates, architects. Audrey Borkenhagen, interior consultant. The revolving restaurant, on the 47th floor, showing the extensive view over Sydney Harbour. The two levels of dining space are furnished in three different schemes, red, blue and yellow." Stamps include "Max Dupain and Associates, 49 Clarence Street, Sydney. BX 4901"; "12 Nov. 1969; 11 June 1970"; and "Used 30 Jan. 1982, *Herald*."

The view from the restaurant's window includes the Sydney Opera House still under construction, the top of the AMP Building and the harbour looking towards the Sydney Heads.

Ref: CL204-16

Price: \$3850



Max Dupain (Aust., 1911–1992)

[The University Of NSW. View From The Engineering Plaza], c1969

Vintage silver gelatin photograph, press print, photographer's stamp, publishing and date stamps "1969" and "1990", and typed slip with caption verso, 16.4 x 21.1cm. *Minor crinkles, stains and dents to upper edge.*

Caption continues "Looking down along the main pedestrian entrance from Anzac Parade." Stamps include "Max Dupain and Associates, 49 Clarence St, Sydney 2000. 29 4901" and "John Fairfax Photographic Library."

Ref: CL204-17

Price: \$2650



Max Dupain (Aust., 1911–1992)

Australia Square, [Sydney], c1969/1974

Vintage silver gelatin photograph, press print, photographer's stamp and publishing stamps with 11 dates from 1974 to 1986, slip of newsprint with caption, and publishing annotations in pencil verso, 25 x 19.3cm. *Handling crinkles with surface cracks, some with retouching, indents due to annotation verso.*

Captions include "Australia Square – which is round." Stamps include "Max Dupain and Associates Pty Ltd, Unit 13, Valletta Building, Campbell Street, Artarmon 2064, Australia. 439 4256"; "Used 9 Nov. 1974, *Herald*"; "Used 16 May 1974, *Financial Review*"; and "Used 3 May 1981, *Sun Herald*."

Illustrated in Seidler, *Australia Square, Sydney*, 1969, p46.

Ref: CL204-18

Price: \$2850



Max Dupain (Aust., 1911–1992)

***Eastern Suburbs, Sydney [Bellevue Hill
Looking Towards Rose Bay]***, c1970s

Vintage silver gelatin photograph, signed in pencil lower right, titled in pencil on original backing below image, 20.7 x 29.3cm. *Upper edge affixed to original backing.*

Ref: CL204-19

Price: \$3950



Max Dupain (Aust., 1911–1992)

[ADC Centre, King And Elizabeth Streets], c1971

Vintage silver gelatin photograph, press print, captioned in ink by another hand, photographer's and two publishing stamps with dates, and publishing annotations in pencil verso, 25.8 x 15.8cm. *Minor handling crinkles, some with surface cracks to corners, indents due to annotation verso, added painted design to negative in upper portion.*

Stamps include "Max Dupain and Associates, 49 Clarence St, Sydney 2000. 29 4901" and "Used 12 June 1971, *National Times*."

Image shows the shadow of St James' Church spire, positioned perfectly on the corner of the lower part of the building. A black "apex" design appears at the top of the building presumably to counter the shadow below.

Ref: CL204-20

Price: \$2650

Max Dupain (Aust., 1911–1992)

[Construction Site For King George Tower, Corner Of King And George Streets, Sydney], c1974



Vintage silver gelatin photograph, press print, “John Fairfax Group Photographic Library” stamp, photographer’s stamp and publisher’s date stamps “1974,” “1980” and “1988” verso with affixed typed press statement with caption and publishing annotations in ink, 20.3 x 25.7cm. *Slight handling crinkles, some with cracking or surface loss, indents due to annotation verso.*

Photographer’s stamp includes “Max Dupain and Associates Pty Ltd, Unit 13, Valletta Building, Campbell St, Artarmon 2064, Australia. Telephone 439 4140, 439 4256.”

Press statement reads “King George Tower progress – unusual design takes shape on city site. The all-concrete frame of the King George Tower project is emerging as possibly the most striking high-rise building to appear in central Sydney for some years. The building has now reached half its eventual 32-storey height, standing 70 metres (210ft) above street level. Located at the corner of King and George Streets, the three-sided building, being constructed by Sabemo Pty Ltd for Hooker Projects, the commercial development division of the Hooker Corporation, makes interesting use of the site. It cuts diagonally across the corner, leaving a large area free for pedestrians and making optimum use of an awkwardly shaped area at the rear of the site. The pedestrian area leads into the twin-level shopping plaza beneath the building, which is expected to be in operation early next year.”

Completed in 1976, the King George Tower has also been known as the IAG House, NRMA House, and American Express Tower. Ref: architectureanddesign.com.au.

Ref: CL204-21

Price: \$3300



Max Dupain (Aust., 1911–1992)

[Dome Interior, Elizabeth Bay House, Sydney], 1980

Vintage silver gelatin photograph, two authentication stamps, one with Dupain's facsimile signature, signed and dated by photographer's son Rex Dupain in pencil and ink verso, 25.7 x 20.2cm. *Minor handling crinkles, some with surface cracks, chips to edges.*

Similar image illustrated in colour with the title "The Cupola, Elizabeth Bay House" in *Max Dupain's Australia*, 1986, p203.

This is considered to be one of Dupain's more elegant and refined interior architectural images. Approximately five variations of the dome interior are held at state galleries.

Ref: CL204-22

Price: \$5500



Max Dupain (Aust., 1911–1992)

[MLC Centre, Sydney], c1980

Vintage silver gelatin photograph, press print, photographer's stamp, architect's and publishing stamps with dates "1983", "1984" and "1986", and annotated in ink in an unknown hand verso, 28.5 x 18.6cm. *Handling crinkles, some with surface cracks, retouching to lower left corner, indents due to annotation verso.*

Stamps include "Harry Seidler & Associates, Architects, 2 Glen St, Milson's Point, [NSW], Australia"; "Max Dupain and Associates Pty Ltd, Unit 13, Valletta Building, Campbell Street, Artarmon 2064, Australia. Telephone 439 4140, 439 4256" and "John Fairfax Photographic Library."

Illustrated in Drew, *Two Towers. Harry Seidler: Australia Square, MLC Centre*, 1980, p13.

Taken from a helicopter, the view is looking towards North Sydney, depicting the Australia Square building on the far left and the Sydney Opera House on the right.

Awarded the Sir John Sulman Medal, the MLC Centre, 25 Martin Place, is considered to be one of Seidler's "most definitive works." Standing at a height of 228 metres with 67 storeys, the MLC Centre "is one of the world's tallest reinforced concrete buildings and was one of the tallest buildings in the world outside North America at the time of its completion. The MLC Centre was Sydney's tallest office building from 1977 to 1992." Ref: Wiki.

Ref: CL204-23

Price: \$3300



Max Dupain (Aust., 1911–1992)

[Healy House, Interior, Hunters Hill, NSW], 1983

Vintage silver gelatin photograph, photographer's stamp and various annotations in ink and pencil verso, 30.1 x 23.8cm. *Slight developing flaws, minor scratch to upper right corner.*

Annotations include "Healy" and job number "12233-16." Stamp includes "Max Dupain and Associates Pty Ltd, Unit 13, Valletta Building, Campbell Street, Artarmon 2064, Australia. Telephone 439 4140, 439 4256."

Designed by architect Neville Gruzman (Aust., 1925–2005), Healy House was completed in 1972. This photograph, commissioned by Gruzman in May 1983, shows an interior view which includes a stained glass window by artist Leonard French (Aust., 1928–2017).

Ref: CL204-24

Price:\$2200



Max Dupain (Aust., 1911–1992)

[Gowing House], 1983

Group of three vintage silver gelatin photographs, each with photographer's stamp and job numbers in an unknown hand in ink verso, sizes range from 19.2 x 30.5cm to 30.4 x 23.9cm. *Slight developing flaws to edges.*

Stamp includes "Max Dupain and Associates Pty Ltd, Unit 13, Valletta Building, Campbell Street, Artarmon 2064, Australia. Tel. 439 4140, 439 4256." Job numbers read "12290/15", "12290/16" and "12283-8."

Two of the photographs show the exterior of Gowing House, the other a view from a window looking out at Sailors Bay, Sydney.

Designed by architect Neville Gruzman (Aust., 1925–2005) in 1969, the house was commissioned by James Preston Gowing (Aust., 1909–1978), who was a chartered accountant and the grandson of John Gowing (Aust., 1835–1908), founder of Gowings department store. Max Dupain was commissioned by Gruzman in October and November 1983 to take these photographs.

"An example of modernist architecture in the Wrightian, organic mould, this house at 8 The Bulwark, Castlecrag was listed as significant as 'one of Gruzman's best houses.' It features a pinwheel plan and a parasol roof with deep horizontal stainless steel fascias and tapered eaves that hover over the 'massive' masonry vertical elements, supported by four stainless steel columns. 'The house demonstrates exceptional innovative contemporary design and exquisite detailing, representative of a late twentieth-century modernist house in Willoughby,' reads the [Willoughby Council heritage] statement of significance." Ref: Wiki; ancestors.familysearch.org; *Government Gazette*, 10.11.1978; NSW State Heritage Inventory Form; architectureau.com.

Ref: CL204-25

Price: \$6600 (The group)

