



Australian & International Art & History

Collectors' List No. 206, 2022
e-catalogue

JOSEF LEBOVIC GALLERY

Celebrating 45 Years • Established 1977

Member: AA&ADA • A&NZAA • IVPDA (USA) • AIPAD (USA) • IFPDA (USA)

© Licence by Copyright Agency for the Visual Arts, 2022, LRN 5523.

Address: 103a Anzac Parade, Kensington (Sydney), NSW

Phone: +61 2 9663 4848 • Mobile: 0411 755 887 • ABN 15 800 737 094

Email: josef@joseflebovicgallery.com • Website: joseflebovicgallery.com

Hours: by appointment or by chance Wednesday to Saturday.



CL206-1

Original Leaf From The “Golden Legend”, Printed By William Caxton, 1483.

\$3300

Very early leaf by England's first printer, William Caxton.

CL206-2

After Jan Brueghel the Elder (Flemish, 1568–1625), engraved by Nicolaes de Bruyn (Flemish, 1571–1656).

[Landscape With Stag Hunt], 1607/later printing.

\$2200



Large format engraving, which may have been intended to be painted and hung on a wall as a substitute for a painting.



CL206-3

After Jacques Callot (French, c1592–1635).

La Noblesse [Nobility], 1624/c1800s.

\$1100

Some of the models in this group of etchings were most likely members of Callot's family.

CL206-4

Charles Rodius (Brit./Aust., 1802–1860).

Bungaree. Chief Of The Broken Bay Tribe, N. S. Wales, c1830.

\$9900

Bungaree was among the “most significant Sydney-area Indigenous leaders of the early colonial period.” A voyager, navigator and diplomat, he “reputedly became the first [Indigenous] person to circumnavigate Australia.”





CL206-5

Vicar. The Rev. W. Thistlethwaite MA, c1830s.

\$990

Clerical author, once well-known and admired in the town and district of Bolton in Lancaster, England, Rev. William Thistlethwaite (1776-1838) was a long-term incumbent of St. George's Church.



CL206-6

Sekisui Nagakubo (Japanese, 1717–1801).

[Japanese Historical Atlas Of China], 1835.

\$3800

This Japanese historical atlas, containing maps of China, traces Chinese history through to the Qing Dynasty.



CL206-7

Auguste Edouart (French, 1789–1861).

[Profiles Of Two Sisters], 1838.

\$990

Auguste Edouart was a prolific silhouette portraitist whose work included a portrait of Victor Hugo. His work is held by a number of international institutions including National Portrait Gallery (UK) and the Smithsonian (USA).

CL206-8

***The Australasian Steam Navigation Company
Shipping Office [Sydney], c1851.***

\$1650

Depicts the company's offices at 1 Sussex Street, Sydney, near its wharf, overlooking Darling Harbour.





CL206-9

[Sumo-Wrestling Frogs – “Choju-giga” Animal Characters], c1860s.

\$660

Animal characters were initially created to make fun of Japanese priests, suggesting an early form of *manga* (cartoon/comics).



CL206-10

[Maori Village] and [Studies Of Sheep, New Zealand], c1860s–1880s.

\$3300

One of the two pencil drawings depicts some of the inhabitants of the Maori village wearing *kahu huruhuru* (feather cloaks).



CL206-11

Adelaide Photograph Album, c1864.

\$26,500

Very important group of 31 outdoor carte-de-visites by one of the prominent photographers working in Adelaide at that time.

CL206-12

Joseph Hull (Amer., active 1870).

Plain Language From Truthful James, 1870.

\$1950

This satirical poem, illustrated with nine lithographs, uses the metaphor of a card game to express anti-Chinese sentiment prevalent at the time.





CL206-13

[Cattle Drovers In Camp, Queensland], c1870s.

\$7700

Uncommon group of six pencil drawings showing drovers' activities while living in the bush during a stock drive.

CL206-14

F Class Locomotive In The Central Highlands Region [Victoria], c1875.

\$1650

Scarce early image of an Australian locomotive.



CL206-15

Eadweard Muybridge (Brit., 1830–1904).

The Celebrated Trotting Horse "Occident", c1878/1881.

\$13,500

This famous sequence of photographs, showing Leland Stanford's horse, Occident, proved that during its gait, all four of a horse's hooves are simultaneously off the ground. This photograph seems to be an uncommon English issue; the other issues were predominantly American.



CL206-16

Pair Of Music Conductor's Batons, c1882 & 1888.

\$1650

Early Australian music paraphernalia for conductors rarely appear in the market.





CL206-17

Grafton, NSW, 1888.

\$2900

Rare bird's-eye view of Grafton.



CL206-18

Brisbane, 1888.

\$3300

Excellent, well-detailed bird's-eye view of Brisbane,
showing the river.



CL206-19

***Ladies' Cricket Team, Adelaide* and *Ladies' Cricket Match, Adelaide*, c1893.**

\$2200

Nineteenth-century photographs of Australian women playing cricket are rare.



CL206-20

***British Novelist Mary Augusta Ward*, 1899–1917.**

\$1100

Australian-born novelist, philanthropist, and political lobbyist.





CL206-21

After **Frank P. Mahony** (Aust., 1862–1916), carving attrib. **Jonaski Takuma** (Japanese/Aust., active 1893–1910).

Rounding Up A Straggler, c1900.

\$9900

Very rare, fine example of emu egg carving replicating a classic Australian painting of a drover, which is held in the Art Gallery of NSW.



CL206-22

“Lightfoot” Champion Trotting Mare Of Australia, c1902.

\$1100

Original framed presentation of an Australian champion trotter.

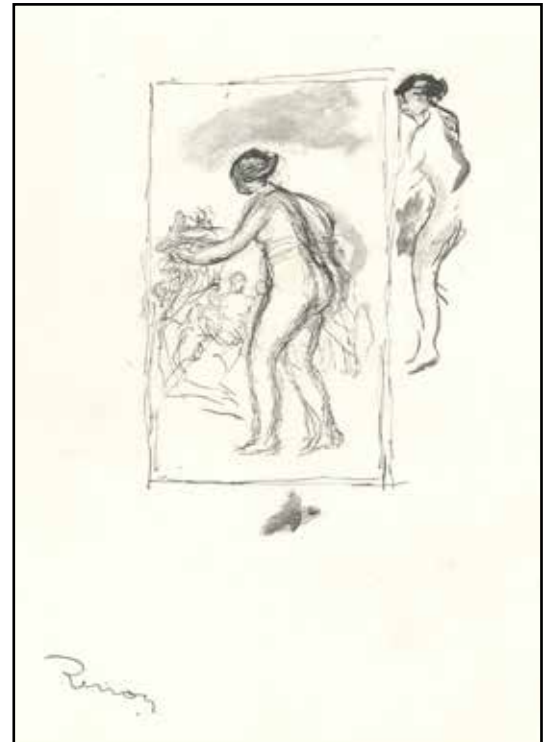


CL206-23

G. Marconi, *The Genius Of Wireless Telegraphy*, 1903.

\$880

Italian inventor and electrical engineer Marconi seated next to one of his inventions.



CL206-24

Pierre-Auguste Renoir (French, 1841–1919).

Femme Au Cep De Vigne [Woman By The Grapevine], c1904.

\$4400

Great example of Renoir's work as a printmaker.



CL206-25

Film Stills From "The Story Of The Kelly Gang", c1906.

\$990

Rare pair of original postcards from the world's first feature film.

CL206-26

Donald MacDonald a.k.a. Pas (1862–1945).

Australian Sculling Champions, 1908.

\$6600

Unusual group of six portraits of Australian champion scullers.





CL206-27

Glenn Curtiss Starting In His Hydro-plane On First Successful Flight Ever Made From The Water, 1911.

\$990

One of the earliest photographs of the first American flying boats.



CL206-28

"Kismet", Australian Champion [Sailing, 18ft Skiff], 1913.

\$1100

Very good example of a naïve painting of a Sydney champion yacht.



CL206-29

[Daisy Bates With Group Of Mirning People (Yinyila Nation)], c1913.

\$8800

Important photographs documenting Daisy Bates and Indigenous people of Eucla in Western Australia.

CL206-30

After **Fred Roe** (Brit., 1864–1947).

The Boy Scout – The Nation's Hope, 1914.

\$990

Early illustration of the Scout Movement for boys, founded in 1907 by Baden-Powell.





CL206-31

Elioth Gruner (Aust., 1882–1939).

Parramatta Park [NSW], 1919.

\$1350

Gruner is known as one of Australia's most prominent landscape painters and only produced a small number of original prints.

CL206-32

**[Shanghai People & Environs,
China], c1920s.**

\$5500

A great collection of 33 photographs capturing the social history of the time.





CL206-33

Kay Nielsen (Danish, 1886–1957).

[Pastel Self-Portrait], c1920s.

\$1950

Danish illustrator Nielsen was well respected by his peers, and his work is highly collected.

CL206-34

[Hydro Majestic Hotel, Medlow Bath, NSW], c1920s.

\$1350

Pair of photographs providing an interesting record of interior furnishing and landscaping of the period.





CL206-35

[Fred Paul, Butcher, 14 Hall Street, Bondi, NSW], c1920s.

\$1650

Group of three photographs providing an uncommon record of a local business in Bondi.

CL206-36

Australian Travel And Immigration Pamphlets, 1922–1935.

\$4400

Group of eight well-designed advertising pamphlets illustrated by prominent Australian artists.





CL206-37

Legislative Council In Session [NSW], 1923.

\$990

Good visual record of lawmakers of their time.



CL206-38

Elizabeth Keith (British, 1887–1956).

Chinese Actor, 1924.

\$3300

This image, a colour woodcut, was used as the cover illustration for the catalogue raisonne by Richard Miles.



CL206-39

Frans Ermengem (Belgian, 1893–c1985).

[Flamenco Dancer With Shawl], 1927.

\$880

This colour woodcut provides a good example of printmaking by Frans Ermengem, who was a Belgian poet, painter, illustrator and art critic.

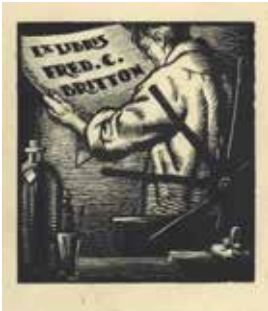
CL206-40

Newcastle Town Hall Opening [NSW], 1929.

\$5500

Group of nine photographs providing an excellent record of the opening of the Newcastle Town Hall.





CL206-41

Will Mahony (Aust., 1905–1989).

Bookplate Collection, c1930s.

\$6600

Collection of 18 items, mostly wood engravings, illuminating the various stages of the creation of a bookplate.

May 10, 1931.

Dear Seymour Halpern -

I'm quite pleased to hear that you want to write an article about me for your College publication. Though I don't quite know why you should. However, I'm worn

the less pleased.

When I was a boy at Eton I heard a sermon in our Chapel on the text "Whatsoever they hand findeth to do, do it with thy might." That struck me as being such sound sense that I made it my rule of life.

CL206-42

Letter By Sir Henry William Forster, 1931.

\$880

Forster was a British politician who served as the seventh Governor-General of Australia from 1920 to 1925. This letter is a reply to someone's enquiry seeking advice on how to achieve a successful life.



CL206-43

Alexander Collingridge (Aust., d.1942).

[Swearing In Of Joseph Lyons, 10th Prime Minister And His Cabinet, Canberra], 1932.

\$5500

Group of five photographs providing a rare record of the swearing-in of a Federal Cabinet.



CL206-44

[Sir Charles Kingsford Smith], c1932/1935.

\$1350

One of the best portraits of Kingsford Smith.

CL206-45

25-7-34

Dear Sir

In answer to your enquiry,
I have been published anything
of a civilian nature concerning the
landing of the Anzac's in New
Zealand from 1915 -
I was in command of the
Naval force employed on that
occasion and my account of the
landing from a naval point of view

CL206-45

Letter By Admiral Cecil F. Thursby, 1934.

\$880

Letter refers to the landing of ANZAC troops at Gallipoli in 1915.



CL206-46

Melbourne Centenary Air Race, 1934.

\$1650

This photograph, autographed by the aviators, shows the winning plane, a de Havilland 88 Comet.



CL206-47

Ishikawa Toraji (Japanese, 1875–1964).

Tsurezure [Boredom], c1934.

\$3500

From the colour woodcut series, *Ten Types of Female Nudes*, depicting Japanese women in fashionable 1930s lounge room and bathroom interiors.

CL206-48

[Billy Hughes, Minister For Health, Visiting Melbourne City Mission Maternity Home, Brunswick], 1935.

\$990

Unusual publicity shot of ex-Prime Minister Billy Hughes.





CL206-49

[Australian Director K.G. Hall On Location With George Heath And Clive Cross], c1936.

\$1350

Candid shot most likely taken on the set of *Orphan of the Wilderness*.



CL206-50

Horst P. Horst (German/American, 1906–1999).

[Playwright Noel Coward], 1936/c1939.

\$2950

Photograph inscribed by Noel Coward to Australian broadcaster, writer and author Frank Clune.



CL206-51

[Australian Filmmaker Charles Chauvel During Filming Of "Uncivilised"], 1937.

\$1350

Legendary Australian filmmaker Charles Chauvel with production crew on set of *Uncivilised*.



CL206-52

Circular Quay Ferry Terminals, NSW, c1938.

\$3900

Collection of five photographs providing great close-ups of Circular Quay's piers prior to development.



CL206-53

Alan McCulloch (Aust., 1907–1992).

[Threat To Australian Wool Industry], 1940.

\$990

Editorial cartoon with an unusual format and drawing style by art critic and historian Alan McCulloch.



CL206-54

Anthony Hordern & Sons, Ltd – Exterior & Interior Views, 1941–1960s.

\$3300

Group of five photographs, showing Hordern's department store during its heyday.

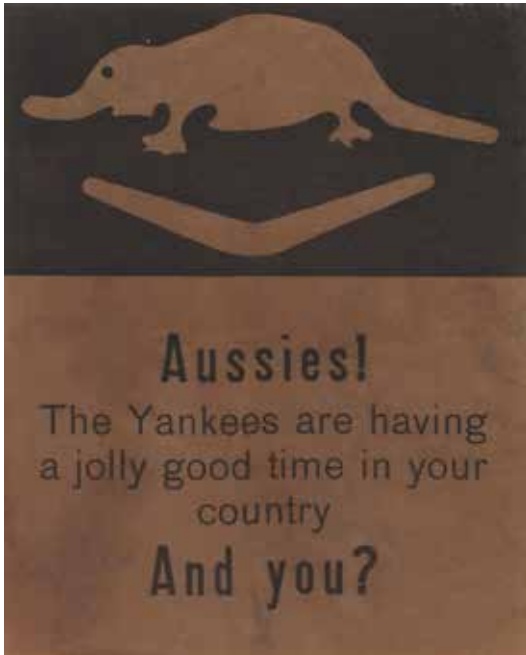


CL206-55

Diggers! You Are Defending Alamein Box! What About Port Darwin? and Aussies! The Yankees Are Having A Jolly Good Time In Your Country. And You? [WWII German Propaganda], c1942.

\$2200

Pair of German propaganda leaflets designed especially for Australian troops defending El Alamein during 1942.



CL206-56

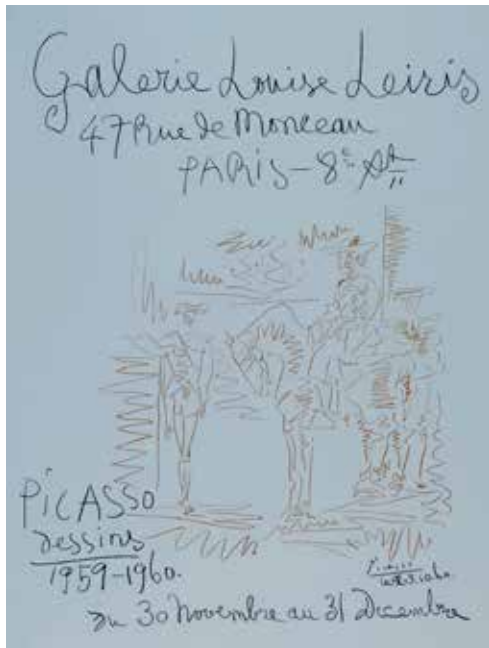
Helmut Newton (German/Australian, 1920–2004).

[Pair Of Fashion Photographs, Melbourne], 1948.

\$4400

Newton's Australian photography rarely comes to the marketplace.





CL206-57

Pablo Picasso (Spanish, 1881–1973).

Picasso Dessins, 1959-1960, Galerie Louise Leiris, 1960.

\$1650

A classic poster by Picasso, promoting his exhibition of drawings in Paris in 1960.

CL206-58

**Harvest Dance By Ukrainian Folk Dancers
Of Sydney [Manly], c1960s.**

\$660

Ukrainian event at Australia Day Celebrations at
Manly Council Chambers.





CL206-59

[Yugoslavia Baths], c1960s.

\$1100

Souvenir of a Serbian riverside holiday spot.

CL206-60

Marino Marini (Italian, 1901–1980).

[Rider And Horse], c1978/later printing.

\$990

Marini was known for his equestrian imagery,
as shown in this colour aquatint.





CL206-61

Keith Haring (Amer., 1958–1990).

Luna Luna: A Poetic Extravaganza!, 1986.

\$2200

Colour process lithograph with pop-up featuring a 3D carousel with Keith Haring's iconic figures.